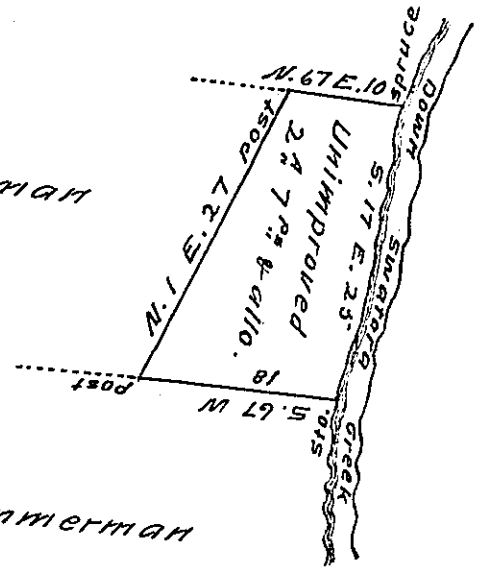


John Adam Zerbe

Peter Zimmerman

Peter Zimmerman



Situate in Pinegrove township Schuylkill County containing
 two acres and seven perches and the allowance of six percent
 surveyed on the 7th day of December 1825 in pursuance of a warr-
 ant dated the 25th day of November 1825 granted John Keiser.
 Resurveyed on the 8th day of June 1827 in pursuance of an
 order of the Board of Property dated the 15th day of February
 1827.

T. LAUDERBRUN, Dep. Sur.
 of Schuylkill Co.

To Gabriel Hiester Esquire
 Surveyor General of Penn'a

IN TESTIMONY that the above is a copy of the original remaining on file in
 the Department of Internal Affairs of Pennsylvania, made
 conformably to an Act of Assembly approved the 16th day of
 February 1833, I have hereunto set my hand and caused
 the Seal of said Department to be affixed at Harrisburg,
 this Fourteenth day of January 1908

Henry Houck
 Secretary of Internal Affairs.